

Flea Market Fancy

Collection designed by Denyse Schmidt for FreeSpirit.
 Quilt designed by Denyse Schmidt for FreeSpirit.
 Finished Size approximately 55" x 62"



Materials Needed

1 yard each of: D1413-050 Brown Crosshatch;
 D1415-050 Brown Geometric Print; D1412-431 Lime
 Retro Floral

Fat Quarter each of: D1412-325 Brown Retro Floral;
 D1413-431 Lime Crosshatch; D1417-265 Blue Buds;
 D1416-418 Dark Green Texture; D1415-265 Blue
 Geometric Print; D1413-265 Blue Crosshatch;
 D1417-425 Lime Buds; D1411-418 Lime Picotage
 Leaves; D1416-402 Light Green Texture; D1414-402
 Green Bud Stripe; D1418-265 Blue Dots; D1410-420
 Lime Floral Bouquet; D1410-245 Blue Floral
 Bouquet; D1411-265 Blue Picotage leaves

Backing 3½ yards

Binding ½ yard

Template Plastic

Cutting Chart for Flea Market Fancy

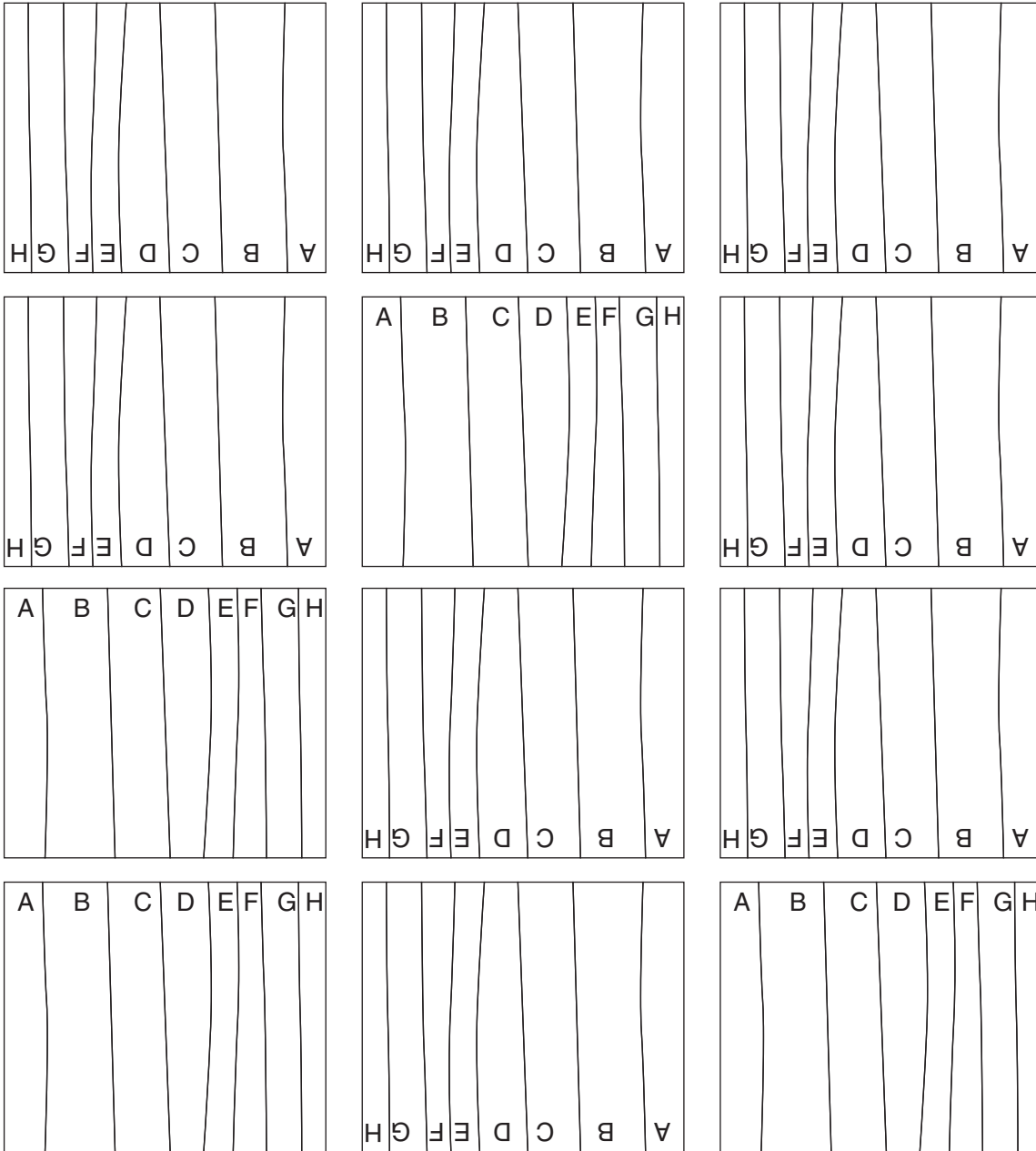
Cutting and Piecing

- The templates for Flea Market Fancy have been cut in half to fit the page. Align the registration marks to make each template. Follow the cutting chart below to cut the correct number of pieces for each template.
NOTE:
TEMPLATES INCLUDE SEAM ALLOWANCE.

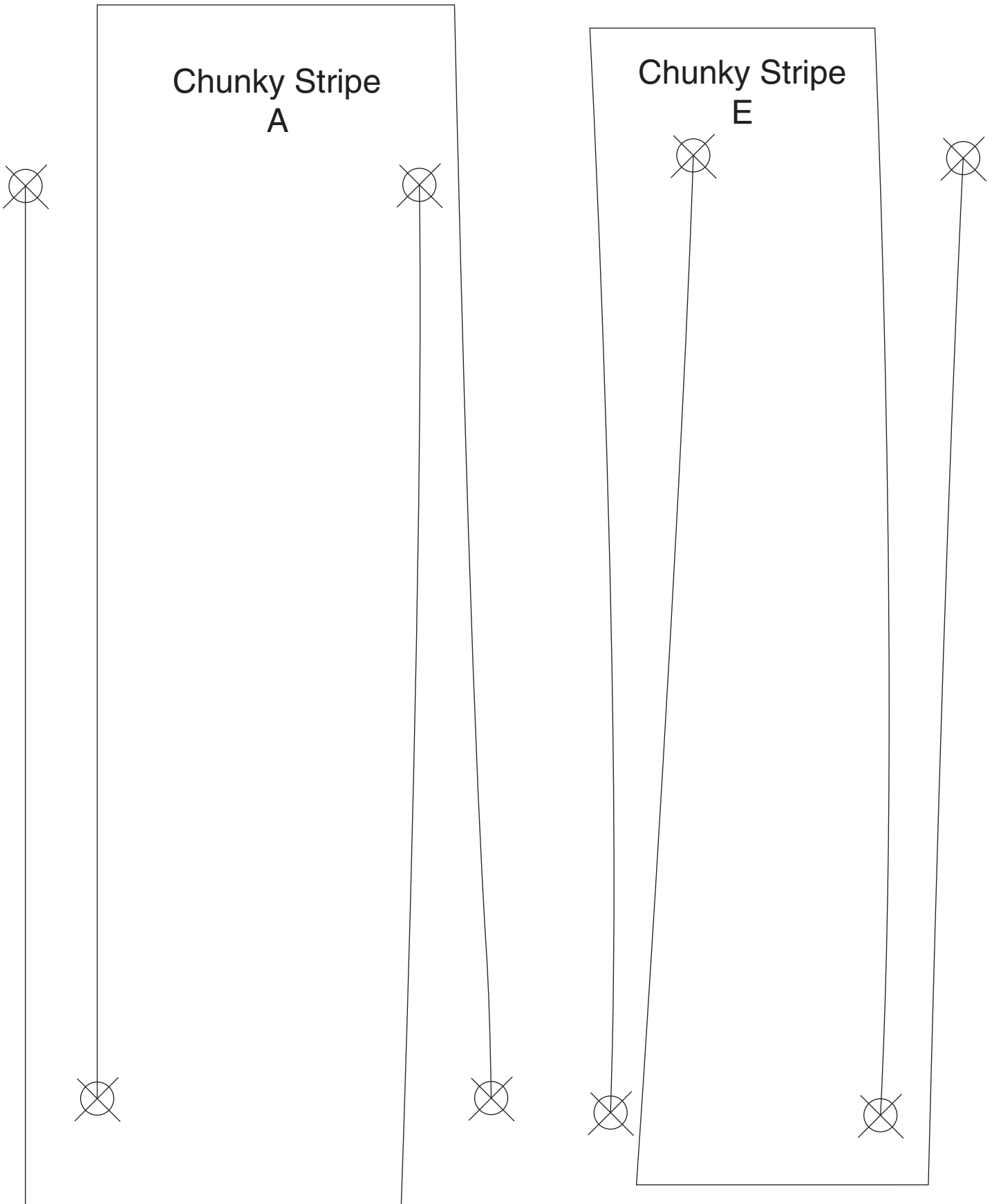
D1412-325	Brown Retro Floral	Cut 1 each of all templates
D1412-431	Lime Retro Floral	Cut 1 each of A, C, E, F
D1413-050	Brown Crosshatch	Cut 3 each of A, C, E, G, 2 each of B, D, F, H
D1413-431	Lime Crosshatch	Cut 1 each of D, E, G
D1413-265	Blue Crosshatch	Cut 2 of H, 1 each of A, B, D
D1417-265	Blue Buds	Cut 1 each of A, C, F
D1411-265	Blue Picotage Leaves	Cut 1 each of B, D, E
D1416-418	Dark Green Texture	Cut 1 each of B, F, H
D1415-050	Brown Geometric Print	Cut 3 each A, C, E, G, 2 each of B, D, F, H
D1415-265	Blue Geometric Print	Cut 1 each of B, C, G
D1417-425	Lime Buds	Cut 1 each of B, D, G
D1411-418	Lime Picotage Leaves	Cut 1 each of A, C, F
D1416-402	Light Green Texture	Cut 1 each of B, E, F
D1414-402	Green Bud Stripe	Cut 1 each of A, D, G, H
D1418-265	Blue Dots	Cut 1 each of E, F, 2 of H
D1410-420	Lime Floral Bouquet	Cut 1 each of B, D, F
D1410-245	Blue Floral Bouquet	Cut 1 each of C, D, F, G

2. Make 12 sets of strips using templates A-F.
3. Stitch strip sets together into rows, then stitch the rows together. The diagram below shows the placement and orientation of each strip set.

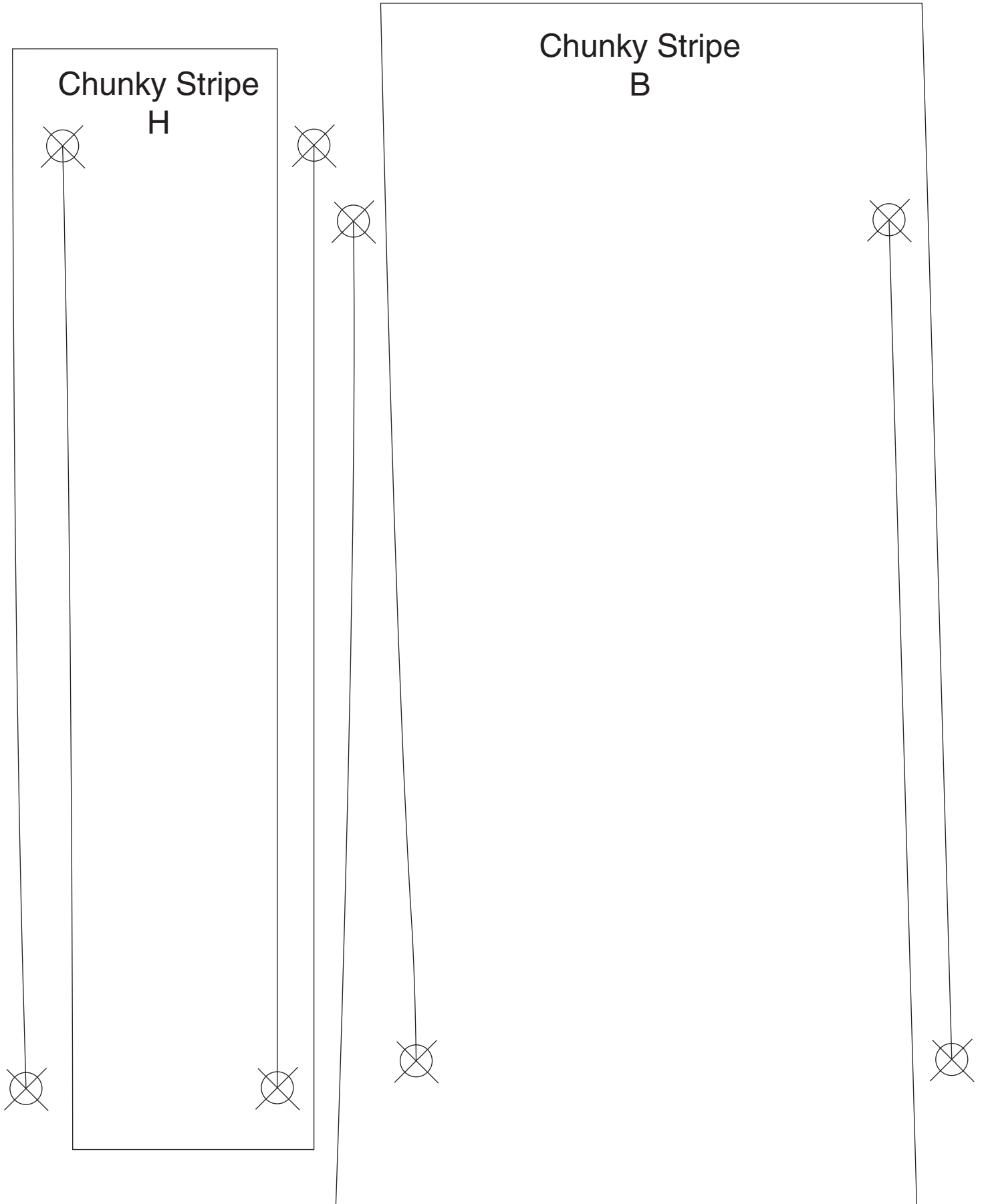
4. Layer, quilt and bind. Binding is cut from D1412-431. Cut strips 2½" wide.



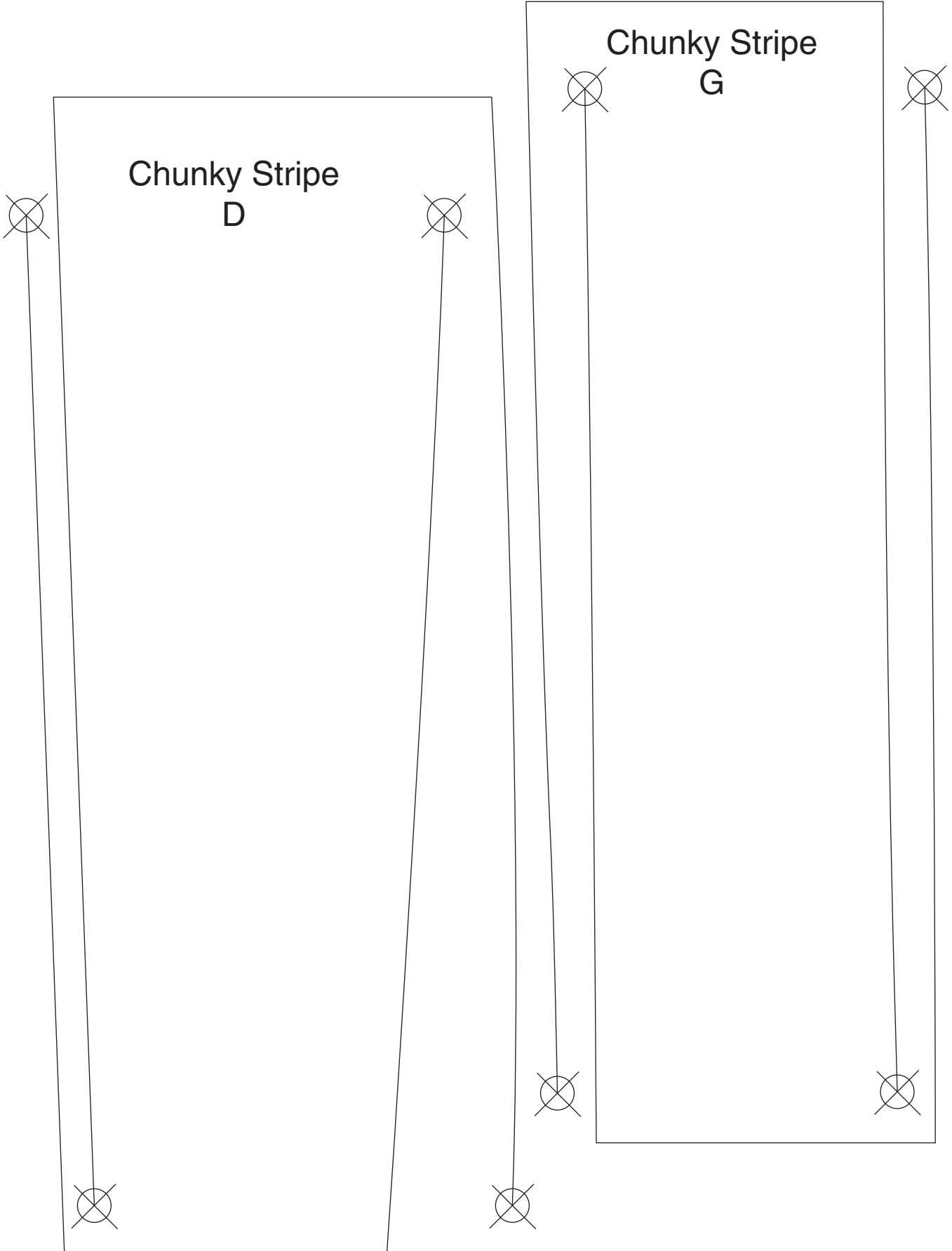
**Seam allowance included.
Make sure your printer is set to print at full size before printing templates.**



**Seam allowance included.
Make sure your printer is set to print at full size before printing templates.**



**Seam allowance included.
Make sure your printer is set to print at full size before printing templates.**



**Seam allowance included.
Make sure your printer is set to print at full size before
printing templates.**

