

Petal Swing

54" x 54"

by Joyce Mullis



featuring fabric from Happy Go Lucky collection
by Nel Whatmore

Free Spirit 

Petal Swing

Designed and quilted by Joyce Mullis



A NW10 Lime
5/8 yard



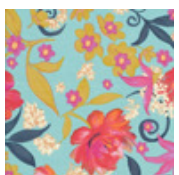
B NW08 Lime
1 yard



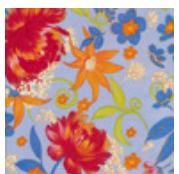
C NW07 Yellow
5/8 yard



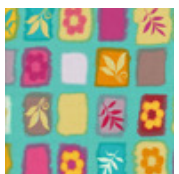
D NW09 Aqua
1 7/8 yards



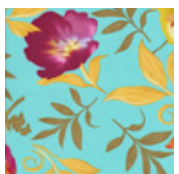
E NW11 Jewel
1/4 yard



F NW11 Orange
1/4 yard



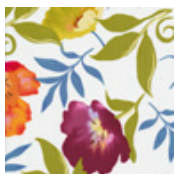
G NW12 Jewel
1/4 yard



H NW07 Aqua
1/4 yard



I NW10 White
1/4 yard



J NW07 White
1/4 yard

Needed: Free Spirit's *Happy Go Lucky* fabrics as set out on list.
Flip-N-Cut Magic Templates™ by Omnigrid®
Templates: 7B and 9A.

All seams are 1/4"

Iron seams to dark fabric. For the two rows of 4 3/4" squares, iron seams open.

Cut:

From A: 1 - 17 1/2" Square
4—4 3/4" squares

B: 2—2" x 17 1/2" strip
2—2" x 21 1/2" strips
2—1 1/4" x 31" strips
2—1 1/4" x 33.5 strips

C: Fussy cut these strips to capture whole flowers:
4—4 3/4 x 21 1/2" strips

D: 1" strips for outer border. Measure across center for the length of these borders.

I: 4—9 1/2" squares

From A, D, and G, cut 7—4 3/4 squares each

From E, F and H, cut 7—4 3/4" squares each. (You may choose to "fussy cut" flowers and/or leaves).

From fusible web: 1- 10" square
4 -7"square

Cut Appliques:

I. From both J and fusible web cut 4 squares 7" being sure to center a flower in the square. Fuse together. Using template 7B, cut 4 appliques. Be sure to position template so flower is centered.



II. From both H and fusible web cut 1 square 10", being sure to center a flower in the square. Fuse together. Using template 9A, cut 1. Be sure to position template so flower is centered



Applique:

Fuse Applique I to center of each of 4 -9 1/2" squares cut from Fabric I. Machine applique. (Uneven zig zag stitch was used)

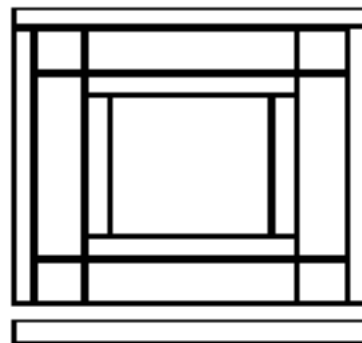
Fuse Applique II to center of 17 1/2" square cut from Fabric A. Machine applique.

Putting it together:

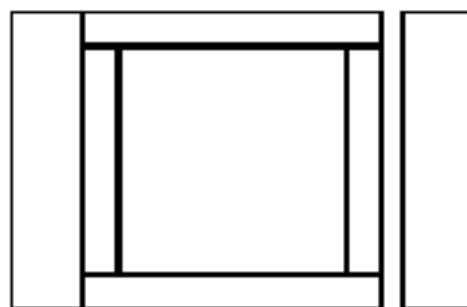


Sew the 2" x 17 1/2 inch strips to the right and left sides of the 17 1/2 inch square. Press.

Sew the 2" x 21 1/2" strips to the top and bottom sides of the center square. Press.



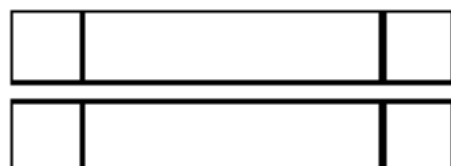
Sew the 2—1 1/4" x 33.5" strips to the top and bottom. Press



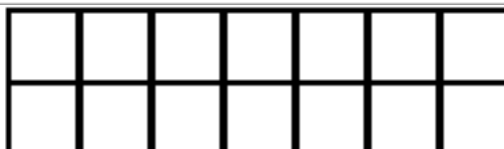
Sew 2 of the 4 3/4 x 21 1/2" flower strips to the right and left sides of the main piece. Press.



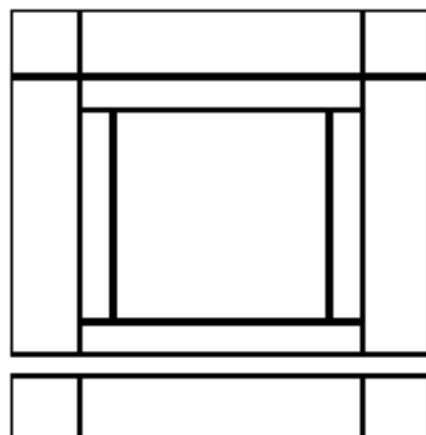
Arrange the remaining 4 3/4" squares in 2 rows of 7 (4 sets) so that it is pleasing to your eyes.



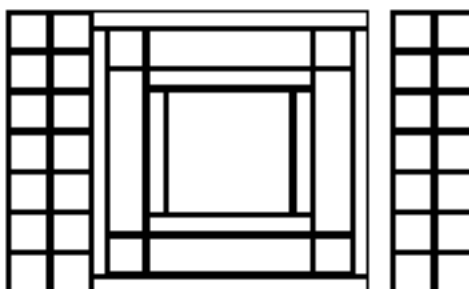
Sew 2 of the 4 3/4 squares to each side of the 2 remaining 4 3/4 x 21 1/2" flower strips. Press.



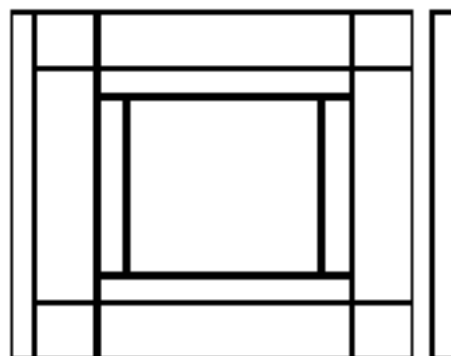
Sew the squares into rows of seven, press, then sew 2 rows together, matching seams. Press



Attach each of these pieced strips to the top and bottom of the main piece. Press.



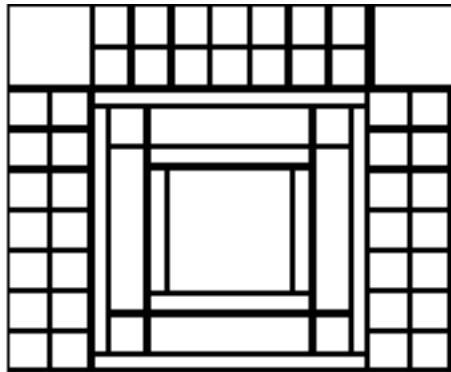
Attach a double row of squares to the left and right sides of the quilt. Press



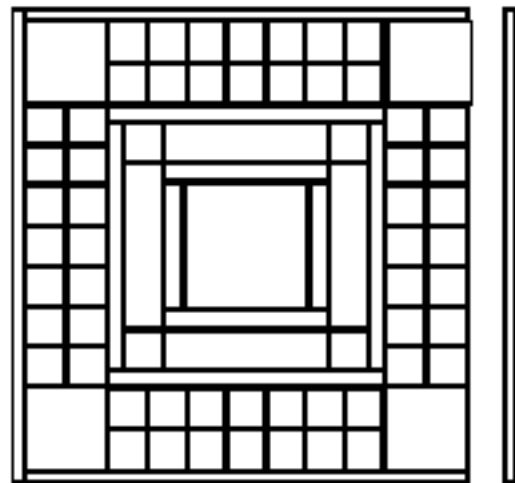
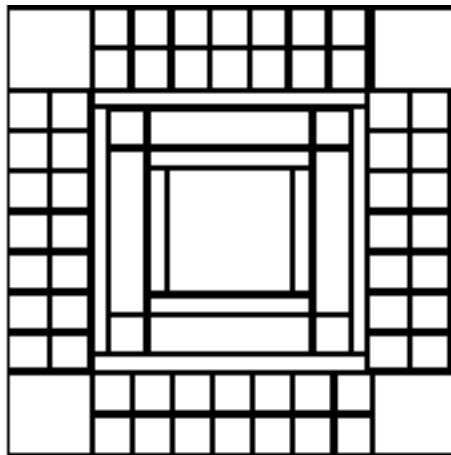
Sew the 1 1/4 x 31" strips to the right and left sides of the main piece. Press



Sew the 9 1/2" appliqued squares to each side of the remaining double rows of squares. Be sure to place with the flower going in the desired direction. Press.



Attach the remaining sets of rows to the top of bottom of the quilt. Press.



Outside Border:

Measure the width of the quilt along the center. Cut two pieces from Fabric D 1" x the width. Attach to the top and bottom of the quilt. Press.

Measure the length of the quilt along the center. Cut two pieces from Fabric D 1" x the length. Attach to each side of the quilt.

Layer quilt top with batting and backing, quilt as desired.

Bind with Fabric D.

Embellish center appliqued flower with beads, if desired.