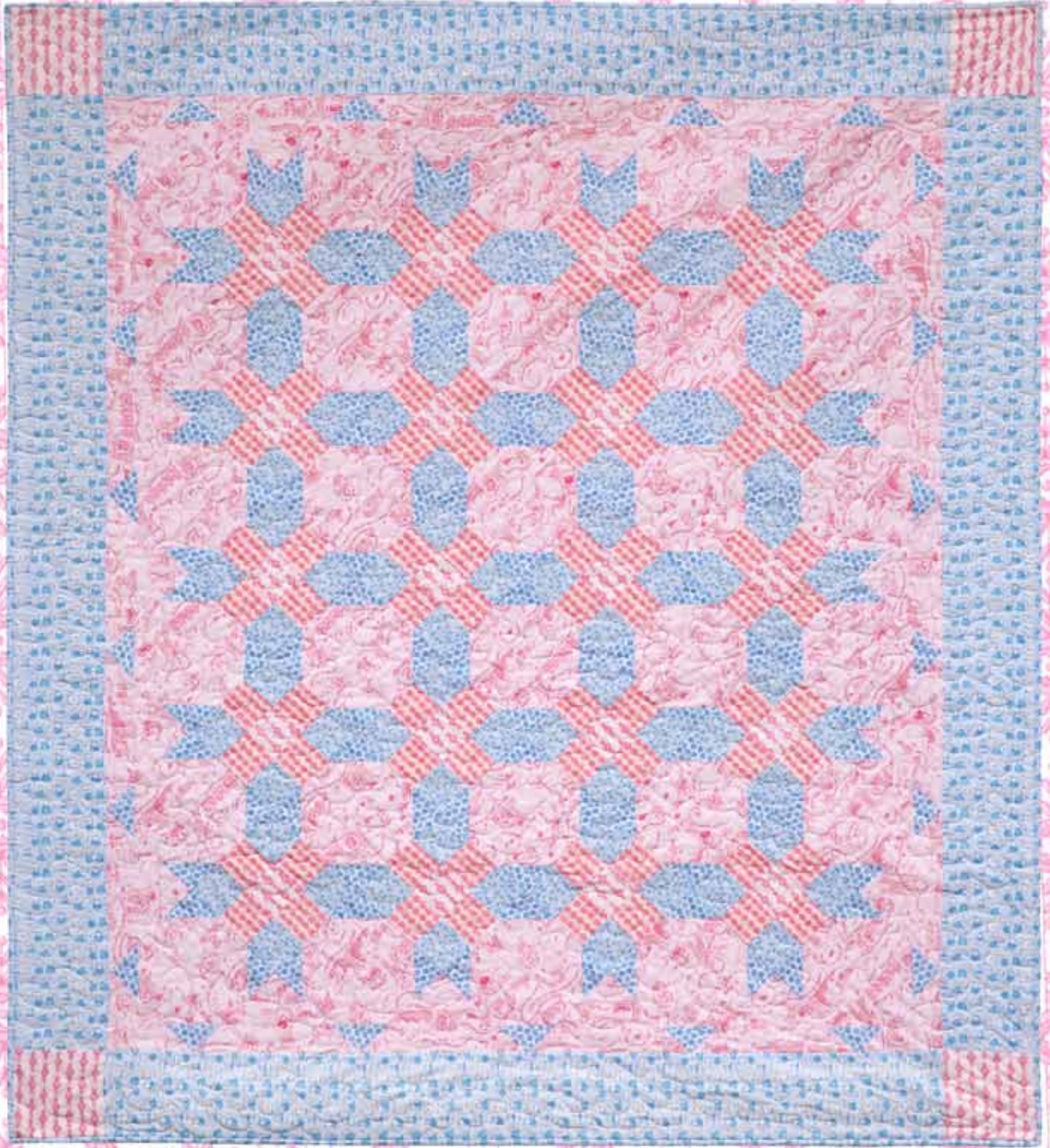


For Boys or Girls Quilt

52 1/2"W x 61"L

by Cheryl A. Adam



featuring fabric from Baby Toiles collection
by Jone Hallmark

Free Spirit 

“FOR BOYS OR GIRLS”

52 ½”W x 61”L

By Cheryl A. Adam

Fabric Requirements

<u>Yardage</u>	<u>Fabric</u>	<u>Cutting Instructions</u>
1 ¾ yd	JH22 Pink	Qty 30- 6 ½”x 6 ½” squares Qty 5- 9 ¾”x 9 ¾” squares cut in half Diagonally twice Qty 2- 5 1/8”x 5 1/8” squares cut in half Diagonally once
1 ½ yd	JH37 Blue	Qty 2- 5 ¼”x 42 ½” from LOF Qty 2- 5 ¼”x 51” from LOF Qty 4- desired width x LOF for binding
¾ yd	JH29 White	Qty 120- 2 ½”x 2 ½” squares
5/8 yd	JH24 Pink	Qty 7- 2 ½”x WOF
½ yd	JH36 Blue	Qty 6- 2 ½”x WOF
½ yd	JH27 White	Qty 2- 2 ½”x WOF Qty 4- 5 ¼”x 5 ¼” squares
3 ½ yd 56”x 65”	Backing fabric Batting	Qty 2- 1 ¾ yd pieces

All seam allowances are ¼” unless noted

WOF= width of fabric

LOF= length of fabric

Block Assembly-Snowballs

1. Draw diagonal lines on the wrong side of the 2 ½”x 2 ½” squares of JH29.
2. Place a 2 ½” square of JH29 on each corner of the 6 ½” square of JH22 (right sides together) as shown in diagram 1. Sew on the diagonal lines drawn in step one. Trim as shown in the diagram. Press the remaining small triangles back to form a 6 ½” square. Repeat 29 times for a total of 32 blocks.

Block Assembly-Nine Patch

1. Sew together a strip of JH36, JH24, and JH36, lengthwise to form a strip set. Press seams towards JH36. Repeat two more times. From these three strip sets cut 40- 2 ½” segments as shown in diagram 2.
2. Sew together a strip of JH24, JH27, and JH24, lengthwise to form a strip set. Press seams toward JH27. Repeat a second time. From these two strip sets cut 20- 2 ½” segments as shown in diagram 2.

3. Sew two segments from step 1 and one from step 2 (alternating) to make the nine patch. Press. Repeat 19 more times for a total of 20 blocks.

Quilt Center Assembly

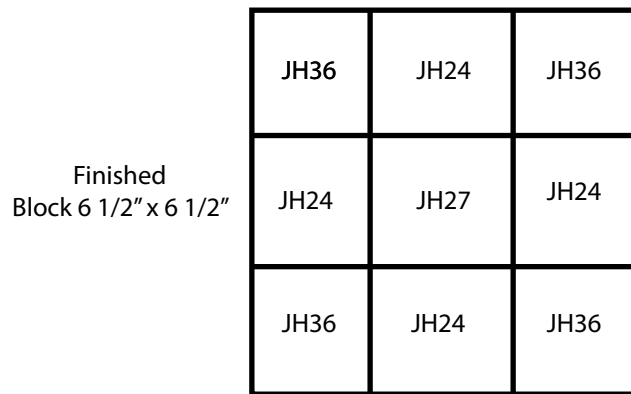
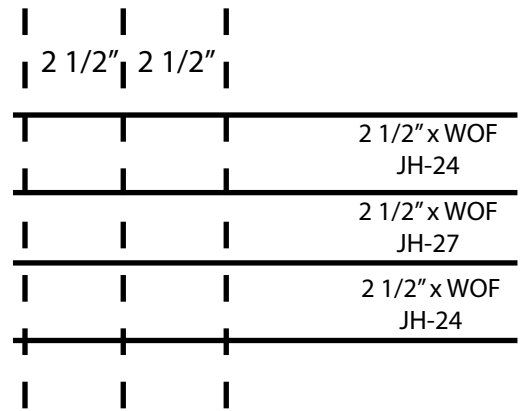
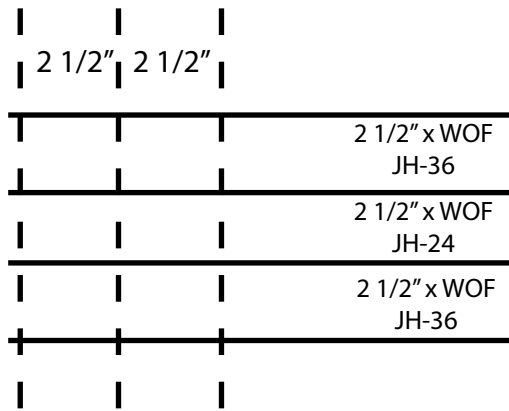
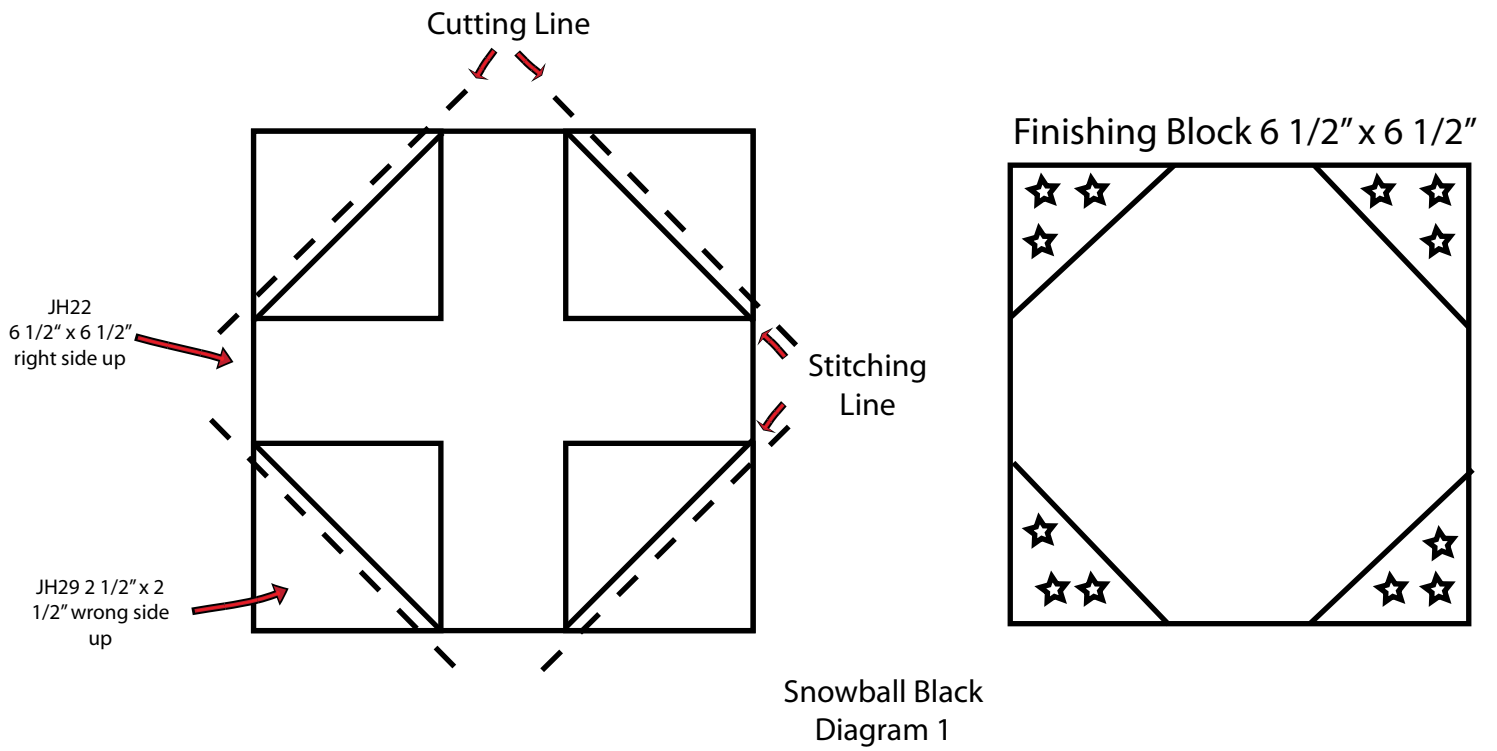
1. The quilt center is pieced together in diagonal rows. Using the quilt picture as a guide, sew the blocks in to rows and then sew the rows together. The corners are the 5 1/8" squares of JH22 cut in half diagonally once. The triangles along the top, bottom, and sides are the 9 3/4" squares of JH22 cut in half diagonally twice.

Add the Borders

1. Sew a 5 1/4"x 51" of JH37 to the long sides of the quilt center. Press.
2. Sew a 5 1/4" square of JH27 to each end of the 5 1/4"x 42 1/2" piece of JH37. Press. Repeat with the remaining 2- 5 1/4" squares of JH27 and 5 1/4"x 42 1/2" piece of JH37.
3. Sew the pieced borders from step two to the top and bottom of the quilt center. Press.

Finishing

1. Sew the two, 1 3/4 yd pieces together along the selvedge edge to make the backing.
2. Layer the backing, batting, and quilt top. Quilt by hand or machine, as desired.
3. Sew the binding strips together to form one long strip. Fold the binding in half, lengthwise, with wrong sides together and press. Sew the raw edges of the binding to the edges of the right side of the quilt. Turn the folded edge of the binding to the back side of the quilt and stitch in place by hand, mitering the corners.



Nine Patch - Diagram 2