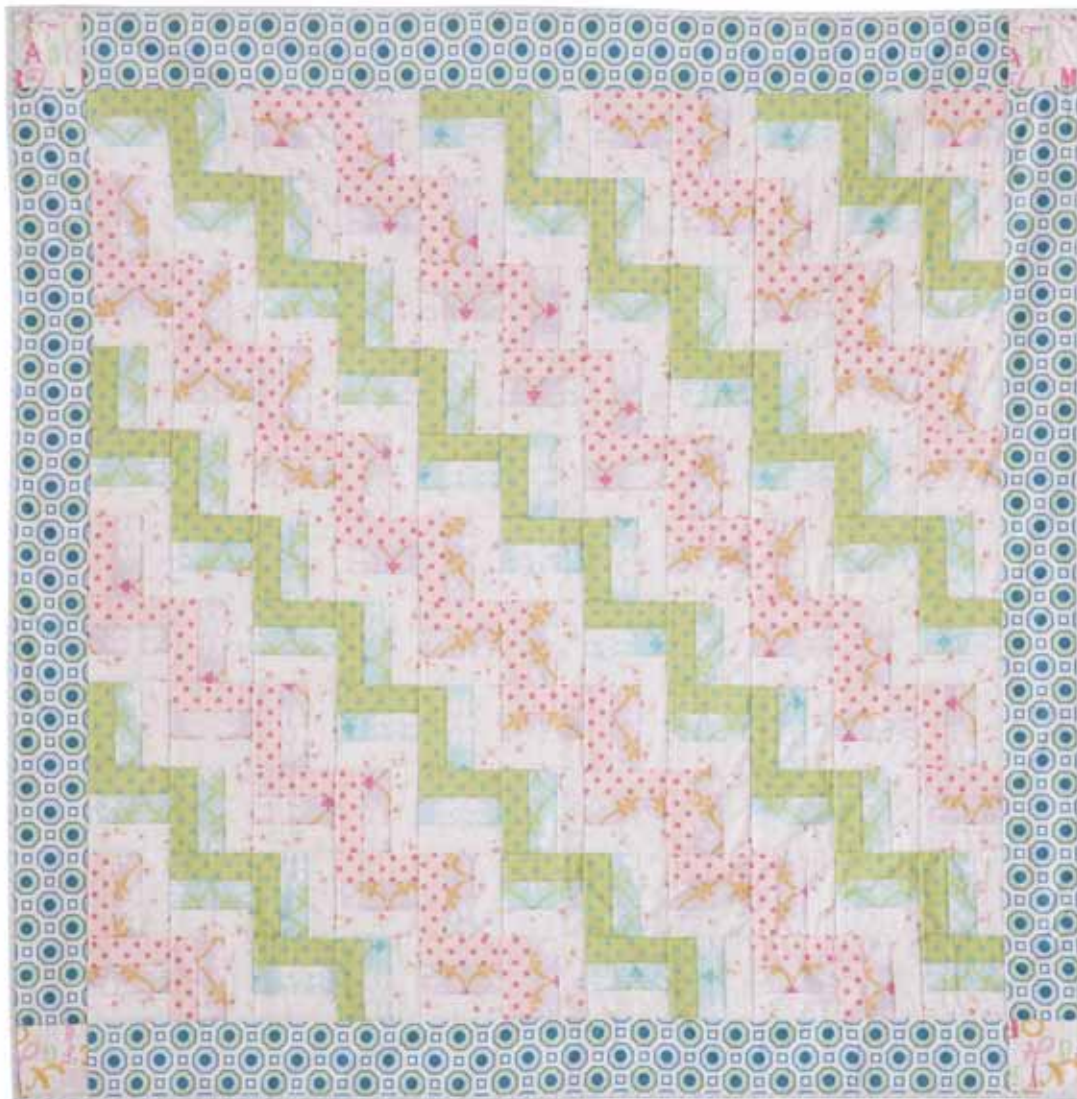


Rail Fence

Little House fabric collection by Annette Tatum for FreeSpirit.

Quilt by Mimi Shimp.

Approximate size: 58" x 58"

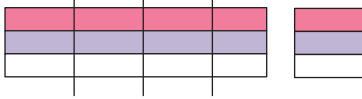


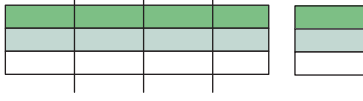
Materials Needed

AT20 Pink (A)	1 yard
AT30 Lilac (B), AT 31 Berry (C), AT30 Turquoise (D), AT 31 Lime (E)	½ yard each
AT18 Pink	fat quarter
AT29 Ocean (Border)	¾ yard
AT16 Frost (Binding)	1 yard
Backing	3½ yards
Acrylic Ruler, mat, rotary cutter, sewing machine, scissors	

Cutting and Piecing Directions

1. From each fabric B-E, cut 8 strips 2" x WOF. From fabric A cut 16 strips 2" x WOF.

2. Make 8 strip sets with fabrics A-B-C. Stitch A to B, then press seams toward B. Stitch fabric C to B, pressing seams toward C. Cross-cut strip sets into sixty-two 5" x 5" segments.
 

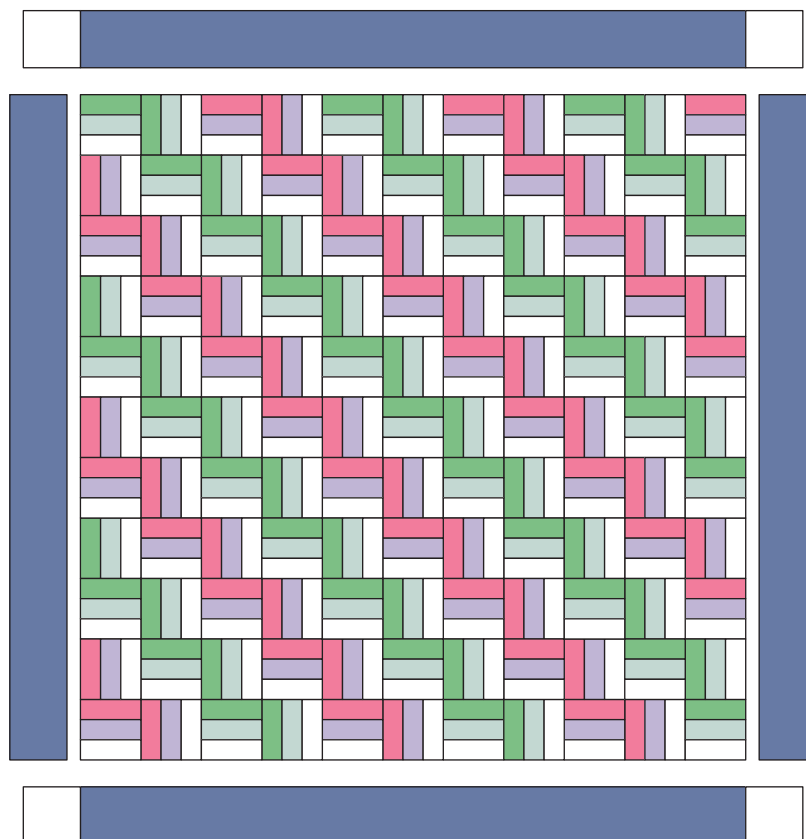
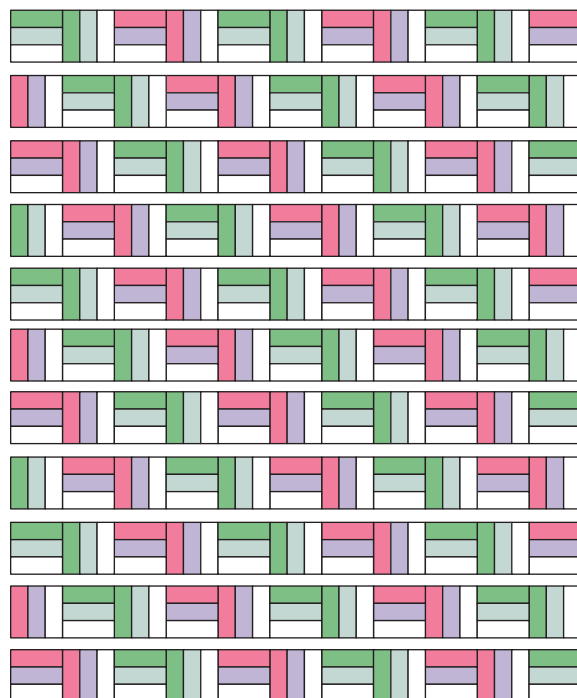
3. Make 8 strip sets with fabrics A-D-E. Stitch A to D, then press seams toward D. Stitch fabric E to D, pressing seams toward E. Cross-cut strip sets into sixty-one 5" x 5" segments.
 

4. From AT18 Pink, cut 4 squares 4¾" x 4¾".
5. From AT16 Frost, cut 5 strips 4¾" x WOF.

6. Arrange segments cut in steps 2 and 3 following the layout top right. Stitch segments together in rows, then stitch rows together. Press seams of each row in opposite directions.
7. Cut 1 strip AT 29 Ocean into 4 segments. Stitch one segment to each of the other 4 strips. Trim strips to 50". The symmetry of this design makes it easy to match the design when stitching the strips together. There is enough length to play with the alignment.
8. Stitch one AT18 Pink square to each end of 2 strips.



9. As shown bottom right, stitch remaining 50" strips to each side of the quilt top. Stitch strips with squares to the top and bottom of the quilt top.
10. Layer, quilt and bind. Cut binding strips on the bias if using the stripe fabric.



Westminster Fibers
 3430 Toringdon Way, Suite 301
 Charlotte, NC 28277
 866 907 3305 FAX 864 877 3269