

tina givens™

Sleepy Afternoon



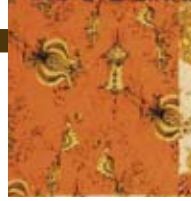
Thanks to Ellen Maxwell for testing!

Finished Size:

Shown in Chloe's Imagination fabric collection by Tina Givens. Colorway: Marigold Palace

www.tinagivens.com tinagivens.blogspot.com

Sleepy Afternoon



This is a simple to make quilt. We used fabrics from Chloe's Imagination by Tina Givens. An eclectic collection with a tiny tint of fairy dust.

Yardage Required,

7 different fabrics

- Fabric 1, Cades Treehouse TG39 1.5yd
- Fabric 2, Fortiny TG46 1.5yd
- Fabric 3, Afternoon Bee TG43 1yd
- Fabric 4, Trellis TG44 1yd
- Fabric 5, Evening Light TG41 1yd
- Fabric 6, Eclectic Layer TG42 1yd
- Fabric 7*, Heaven TG40 1 yd
- Fabric 8, In Time TG45 - 5 yards for backing

* No. 7 is the accent fabric and should be the one that stands out. I love chocolate so of course I saved the darkest and richest for the accent border and surprise tiny squares.

Making the Blocks, *2 different blocks*

- Sew 2" squares of Fabric 7(Heaven) to the C pieces, 2x13"
- Make 18 Combinations of this kind. You should have 7 with Fabric 1 and 10 of Fabric 2 (small square being Fabric7).
- Attach these combination pieces to the side edge measuring 14.5" of the rectangles A, 13x14.5"
- Review the quilt image to determine which side of those rectangles you're going to place the strips. The second block is simply the plain 14.5" square.

Cutting Instructions,

A, B, C, D:

Basically you need:

Piece A: 18 rectangles measuring 13x14.5"; and

Piece B: 12 squares measuring 14.5"

Piece C: 18 Strips measuring 2"x13"

Piece D: 18 squares 2"

Piece E: 4 squares 3"

Fabric 1, Cades Treehouse 3 A and 1 B, 7 C

Fabric 2, Fortiny 3 A and 2 B, 10 C

Fabric 3, Afternoon Bee 3 A and 1 B

Fabric 4, Trellis Leaf 3 A and 2 B

Fabric 5, Evening Light 3 B

Fabric 6, Eclectic Layer,

- Cut 2 strips 14.5" 'width of the fabric'

- Cut 3 A and 2 B

- Cut 2 strips, 3" 'width of the fabric'

- Cut 4 - 3"x20" for outer border

Fabric 7*, Heaven: Cut 9 strips: 2" x 'width of the fabric'

- Cut one of those strips into 18 - 2"x2" squares

- The remainder of these strips will be used for the inner border

- Cut 1 strip, 3" x 'width of the fabric'

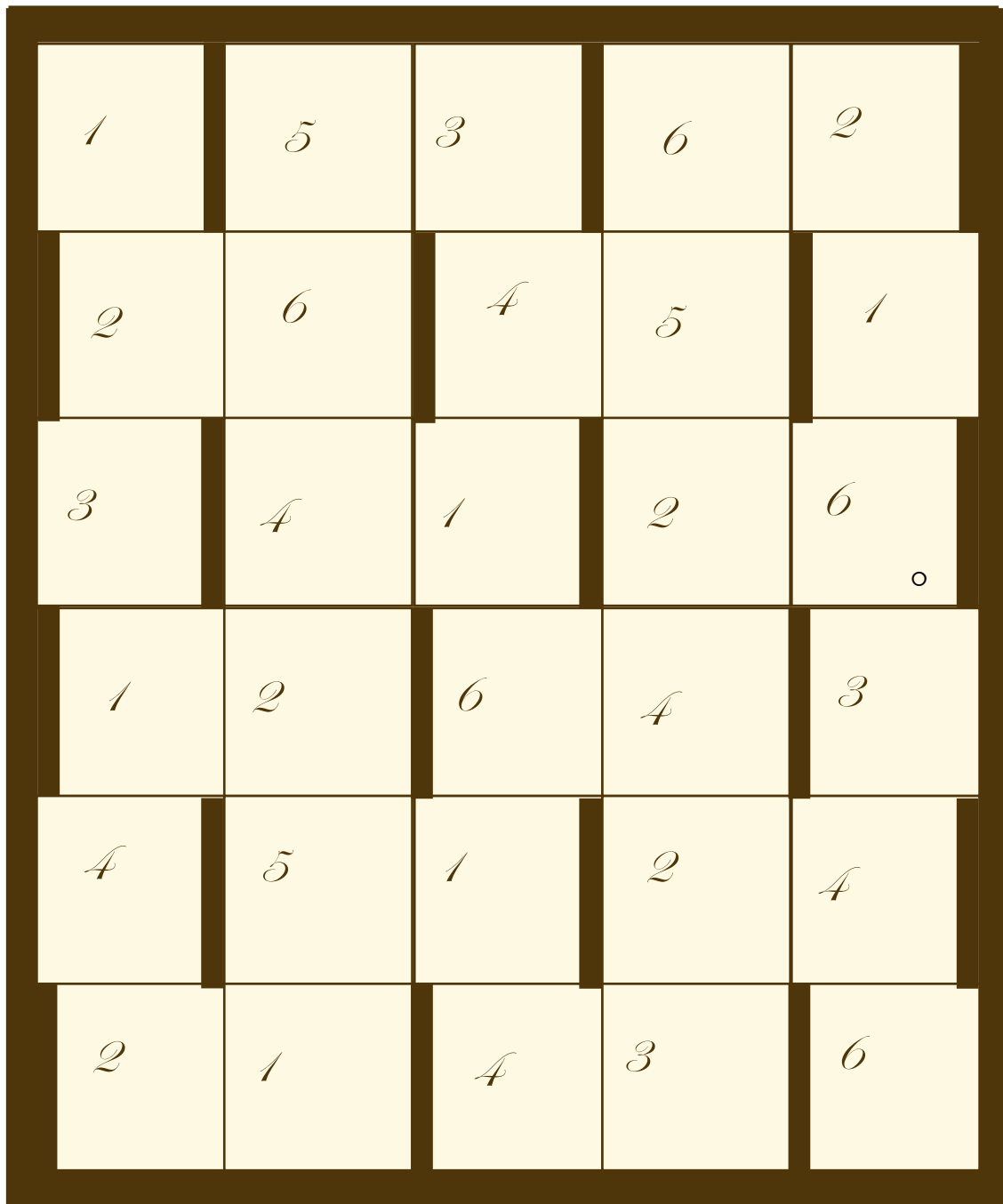
- Cut 4 squares, 3"x3" for corners of the outer border

- Cut 8 strips, 2" 'width of the fabric' for binding

Seam allowance for this quilt is 1/4"

Quilt Layout

www.tinagivens.com



Layout and Final Steps

Using the layout diagram, layout your quilt as shown. Basically one column has the alternating combination blocks, and the next row is one of the plain 14.5" squares. And the overall quilt is 5 blocks across and 6 down.

Sewing

Sew the blocks together to make rows, and the rows together to make the quilt. Press as you go. Add inner border. Sew 3" squares to corners of outer border. And add.

